

SPEC SHEET + MEASUREMENTS

SPORT-TEK

Sport-Tek® Long Sleeve Rashguard Tee. ST470LS

Product photo



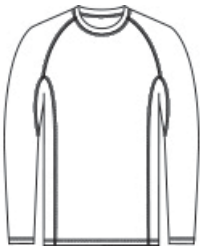
These tees stretch and move with you while you're swimming or during any water activity. Designed to combat UV rays and moisture, these breathable and quick-dry tees also have PosiCharge technology to lock-in colors and logos.

- 5.9-ounce, 90/10 poly/spandex stretch jersey with PosiCharge technology
- UPF rating of 50
- Trim, comfortable fit
- Tag-free label
- Raglan sleeves
- Underarm gussets

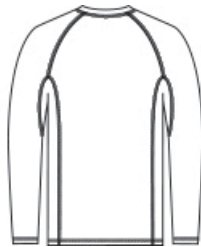
CARE INSTRUCTIONS

Machine wash cold with like colors. Do not use fabric softener. Only non-chlorine bleach, when needed. Tumble dry low. Remove promptly. Cool iron, if necessary. Do not dry clean.

Sketches



front



back

SPEC SHEET + MEASUREMENTS

SPORT-TEK

Sport-Tek® Long Sleeve Rashguard Tee. ST470LS

PRODUCT MEASUREMENTS

	XS	S	M	L	XL	2XL	3XL	4XL
Body Length at Back	26 1/2	27 1/2	28 1/2	29 1/2	30 1/2	31 1/2	32	32 1/2
Chest	17 3/4	19 1/4	20 3/8	21 1/2	23	24 1/2	26 1/2	28 1/2
Sleeve Length from Center Back	32 3/4	33 1/2	34 1/4	35	35 3/4	36 1/2	37 1/4	38

Body Length at Back: Measured from high point shoulder to finished hem at back.

Chest: Measured across the chest one inch below armhole when laid flat.

Sleeve Length from Center Back: Measure from Center Back neck to shoulder point to sleeve hem.

SIZE CHARTS

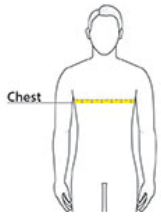
	XS	S	M	L	XL	2XL	3XL	4XL
Chest	32-34	35-37	38-40	41-43	44-46	47-49	50-53	54-57

SPEC SHEET + MEASUREMENTS



Sport-Tek® Long Sleeve Rashguard Tee. ST470LS

HOW TO MEASURE



CHEST

Measure under the arm and around the fullest part of the chest with arms down, keeping tape horizontal.

COLORS



Black
PMS BLACK
C



Dark Smoke
Grey
PMS 425C



True Royal
PMS 7687C



White